

INTRODUCTION

Architecture is the physical articulation of a shared intent. Both the ideas of society and the individual conspire in shaping its visual power. When successfully combined they build lasting traditions.

From inception, LumenArch has sought to better sculpt inspired ideas and social values into architectural realities through the subtleties of illumination. With expertise ranging from museums, universities, concert halls, government buildings, retail and health care facilities, landscapes, public works, restaurants and residences, we manipulate lighting design to integrate form and aesthetics consistent with function.

Ever discovering creative ways of enhancing the integration of daylight and its substitutes, we bridge technology and the end user economy. In enhancing the beauty of space and materials with light, we practice socially responsible design solutions consistent with our membership in "Leadership in Energy and Environmental Design."

Our firm is capable of providing a full menu of services from conception to completion with all calculations, mockups, programming, planning, coordination, shop drawing review, site visits, punch lists, and final calibrations in sequence. We comply with all state and city codes, safety requirements and professional guidelines as a social as well as professional rule.

LumenArch services embrace appropriate modifications of standard fixtures as well as custom designs to meet unique aesthetics and performance requirements or opportunities of each project. Our emphasis is on the integrity of the design, programming of user controls and maintenance for simplicity, efficiency and budget compliance.

Designing for location, LumenArch works with project managers to navigate the intricacies of historic preservation, art commissions, parks and recreation departments, community boards, as well as other school construction and oversight authorities.

Ours is a goal of combining our diverse talents with those of our clients for the maximum synergy of design, aesthetics and utility.



NELSON C. JENKINS

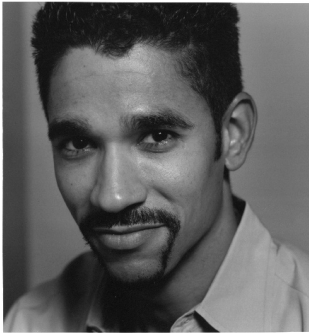
Nelson Jenkins has been creatively working in lighting design, construction, and professional development for the last decade. He is Lighting Certified, a Registered Architect in the state of New York, and a LEED™ Accredited Professional. To date his span of projects include the United States, France, Germany, United Kingdom, Mexico, Puerto Rico, Scandinavia, and Canada. The project types of this work have ranged from museums, sculptural icons, places of worship, performing arts centers, to hotels, showrooms, offices, retail outlets, residences, restaurants, schools, embassies, sports training facilities, and public works.

Graduated from the Rhode Island School of Design, he started his career in lighting and museum planning with George Sexton Associates, where he worked on projects including The National Archives (DC), The Baltimore Art Museum, The Denver Art Museum, The Philadelphia Museum of Art, The Museum of Modern Art (NY), The Whitney Museum (NY), The Cooper Hewitt (NY), The Winterthur Museum (DE) and The Sainsbury Centre for Visual Arts (UK). These roles involved architectural planning, comprehensive lighting systems, and art conservation employing advanced lighting techniques.

As an Associate at Ann Kale Associates from 1997-2002, Jenkins had responsibilities in project management, design, detailing, and coordination. Their clients and architectural collaborations included The New Bronx Criminal Court with Rafael Vinoly Architects, Communication Arts Complex at The University of St. Louis with Pei Cobb Freed Associates, The High School of Law Enforcement and Public Safety with Polshek Partnership, Hudson River Park Redevelopment (Segments 6 & 7) with Richard Dattner Associates, and The Long Island Childrens Museum with Gran Sultan Associates.

In 2002, Jenkins joined the design team of Thompson and Sears Lighting, working on the new U.S. Courthouse in Buffalo with architects Kohn Pedersen Fox, The Washington Heights Library with Richard Dattner and Partners, The Metropolitan Club and The Masterworks Museum in Bermuda with Acheson Doyle Partners. Simultaneously their construction projects included The Ford Design Center at Northwestern University with Davis Brody Bond and The United Federation of Teachers National Headquarters with Gensler Architecture. When Thompson and Sears merged with the Brandston Partnership, Jenkins performed as an associate there.





In 2005 Jenkins launched himself as an independent practitioner, founding LumenArch as a comprehensive lighting design consultancy.

Beyond project related activities, Jenkins teaches graduate and undergraduate lighting design studios at Pratt Institute and Parsons New School, the latter for a unique course focusing on lighting technologies with a conjoined design studio addressing the integration of electric light and daylight; he has also taught design and lighting at The New York School of Interior Design (NYSID), The Parsons School of Design, The New York School of Visual Arts (SVA), and The New York City College University (CUNY). For the profession, he regularly conducts design workshops sanctioned by the AIA for continuing education and was invited to make presentations at Lightfair International. Along the way, he has served as a judge for the International Illumination Design Awards (IIDA) both locally and regionally. He has lectured on his involvement in restaurant lighting; one of which received local, national and international awards for design excellence from the Illuminating Engineering Society North America (IESNA) and International Association of Lighting Designers (IALD). From 2002, as a member of the Designers/Lighting Forum he continues to be elected by the membership to serve on its Board of Directors, and is an active member of the Illuminating Engineering Society.

